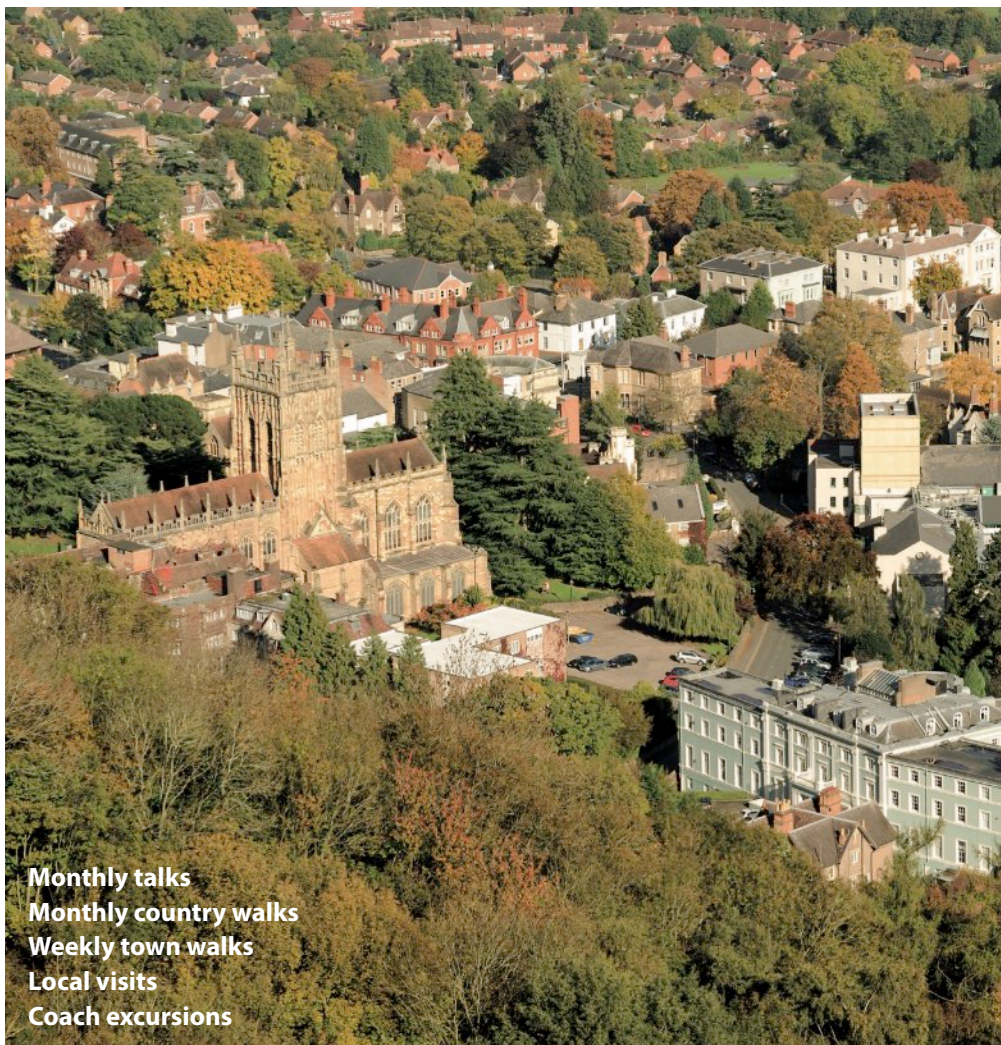




# MALVERN CIVIC SOCIETY

*Caring about Malvern*

# DIARY OF EVENTS 2024



Monthly talks  
Monthly country walks  
Weekly town walks  
Local visits  
Coach excursions

# Welcome to our 2024 programme!

All our events are open to everyone, whether a member of the Society or not; if you would like to know more about us or, perhaps, are thinking of becoming a member, please look at our website: [malverncivicsociety.org.uk](http://malverncivicsociety.org.uk)

Following our recent members' survey, our 2024 programme will again offer monthly talks on topics of interest linked to the aims of the Society, local and coach visits, and country and town walks. However, for the first time, we have created a themed programme for each month, which we hope you will enjoy.

You will see that, as well as a one-day coach visit, we are planning an exciting new three-day weekend event exploring Oxford and Blenheim and we do hope that you will be interested in joining us!

In response to members' requests, we are also offering a new monthly social events' programme for 2024. Each month we will change venue and we will vary the meeting times too. The venues will be in or around Malvern and are mostly independents. Events for the first quarter are listed in the programme and thereafter via the monthly members' newsletters. There is no charge (apart from what you choose to buy on the day!), but we ask you book via **TicketSource** (there is no booking fee), as we are then able to advise each venue ahead of time on numbers to expect. As part of this social programme, we will be organising a summer and a Christmas party, and more details will be available later in the year. For further information, please contact Carole Entwistle, Social Events Team Leader, at [social@malverncivicsociety.org.uk](mailto:social@malverncivicsociety.org.uk)

**Booking arrangements for our country walks, town walks, local and coach visits and social events will be via the on-line platform TicketSource; please see the information on the next page about how to apply, which also appears on our website.**

**Our monthly talks** will take place on the second Friday of each month in the Eden Centre, Grovewood Rd, Malvern, WR14 1GD. Doors will open at 6.30pm, with tea, coffee and biscuits available, included in the charge of £3 (may be subject to change during the year). The talks will begin at 7.30pm. Any change to these arrangements will be notified in the monthly newsletter.

**Country walks:** there will be nine country walks during 2024; dates and outline details can be found in this programme. Walks on Saturdays will start at 10.00am and the Monday and Thursday walks will begin at 2.00pm. There will be a mix of demanding, moderate and relatively easy walks. There is no charge for participating in our walks and further details about each walk will be given in the Society's monthly newsletter and on the website.

**Please book each walk on TicketSource and do not simply arrive on the day!**

For further information, please contact Christopher Barnett on [countrywalks@malverncivicsociety.org.uk](mailto:countrywalks@malverncivicsociety.org.uk).

**Weekly Town Walks**, from Easter to autumn, start from the Tourist Information Centre (TIC) at 10.30am on Saturday and Monday mornings. The current fee is £5 per adult (may be subject to change); children under 14 go free.

For groups of more than 10 people, please book beforehand at the TIC. Coordinator Lesley Cutler can be contacted on [lesleyc.cutler@btinternet.com](mailto:lesleyc.cutler@btinternet.com)

**Local visits** are held during spring, summer and autumn and usually involve using your own transport, or a car share, and we ask that bookings are made at least two weeks in advance, using **TicketSource**.



**Coach visits** are again being offered in 2024, including the new three-day visit to Oxford and Blenheim, which we hope will attract your support; these should also be booked via **TicketSource**.

For terms and conditions, including our cancellation policy, please see the Society's website. These can also be requested from Jenny Cowpe, Events Diary Co-ordinator, on [events@malverncivicsociety.org.uk](mailto:events@malverncivicsociety.org.uk)



Jules & Jenny from Lincoln, UK, CC BY 2.0

For country walks, town walks, local and coach visits and social events, please go to Malvern Civic Society event tickets from **TicketSource** to book your tickets (they will add a small booking fee to each transaction unless the event is free). You can also access the link via our website. Payment can be made via debit or credit cards. They will email you a ticket, which should then be printed off. **TicketSource** also offers a telephone box office service, which is open Monday to Friday 9am–7pm and Saturday 9am–5pm. The customer will be charged a £1.50 telephone service fee on top of the ticket price and booking fee. Tel: 0333 666 4466

### SOCIAL

#### Thursday 11 January. Social: Lunch at Malvern Cube

The first opportunity of '24 to meet and make friends with other members and those who may like to join our friendly and diverse Malvern Civic Society.

**Social leader:** Ruth Smith

**Price:** Free but pay for your own lunch or snack

**Maximum number:** 20

**Start:** Mid-day

**Finish:** 1–1.30pm

**Address:** Albert Road North, Great Malvern WR14 2YF

### TALK

#### Friday 12 January. Talk: *Malvern's Distinguished Ladies with the Common Touch*

To be given by Faith Renger

While some of the four ladies you will hear about in this opening talk by Faith Renger may not have sought the company of ordinary folk, each of them was motivated to improve the lot of the working classes and were influential at a time when male achievements were the accepted norm. We look forward to hearing about these formidable ladies: Lady Foley, Lady Lyttelton, Lady Howard de Walden and Lady Harberton

### LOCAL VISIT

#### Thursday 25 January. Local Visit: Tour of the Morgan Factory

We will have an expert guided tour starting with a video, followed by a tour of the factory, a visit to the archives and an opportunity to visit the Morgan shop.

**Visit leader::** Carole Entwistle

**Price:** £26.50 plus booking fee

**Maximum number:** 50

**Start:** 10.40am

**Finish:** c.12.40pm

**Address:** Pickersleigh Road, Malvern Link. WR14 2LL

### TALK

#### Friday 9 February. Talk: *Sir Barry Jackson and the Malvern Festival 1929–1937: The Ideal Combination of Event and Environment*

To be given by James Kelly.

This talk details the history of the Malvern Festival and the role of its founder, Sir Barry Jackson, the foremost theatrical impresario of the time and a Malvern resident. His artistic policy in Malvern focussed on quality drama with an emphasis on the work of George Bernard Shaw. Although the Festival was only four weeks long, it was a significant event, and over 50 plays were presented during the eight years of Jackson's involvement.

## Tuesday 13 February. Social: Lunch at Bluebird Tea Rooms

An opportunity to socialise where Elgar once did. Light lunches, sandwiches and homemade cakes available while you chat.

**Social leader:** Carole Entwistle

**Price:** Free but pay for your own lunch or snack.

**Maximum number:** 29 (over two floors)

**Start:** Mid-day

**Finish:** 1–1.30pm

**Address:** 9 Church Street. WR14 2AA

## Tuesday 27 February. Local Visit: Malvern Theatres Talk and Tour

We will have an exciting opportunity to find out about the future plans for the theatre, followed by a tour (excluding the cinema).

**Visit leader:** Andrew Huntley

**Price:** £5 plus booking fee

**Maximum number:** 50

**Start:** 10.30am

**Finish:** c.12 noon

**Transport:** own transport/car share.



Morgan Plus 8

### Friday 8 March. Talk: *The Rise and Fall of Dr Gully*

To be given by Colin Fenn.

Many in Malvern will have heard of Dr Gully, where he is best known for the Water Cure. But less well known here are the events of 1876, when his story took a dramatic turn as he became embroiled in a sensation, one of London's great unsolved murder mysteries.

Colin Fenn has followed the plot of London's 'Murder at the Priory' for some twenty years and his talk will reveal the rise and dramatic fall of the famous doctor.

### Wednesday 13 March. Social: Lunch at The Foley Arms (Weatherspoons)

Take in the spectacular views whilst enjoying socialising in a very popular hostelry with both visitors and locals.

**Social leader:** Joan Edwards

**Price:** Free but pay for own lunch or snack

**Maximum number:** 30

**Start:** Mid-day

**Finish:** 1–1.30pm

**Address:** 14, Worcester Road, WR14 4QS

### Saturday 23 March. Country Walk: Dymock and Daffodils

A stroll through the famous carpets of wild daffodils in Dymock Woods.

**Walk leader:** Christopher Barnett

**Start:** 10.00am

**Length:** 4.5 miles

Full details and meeting points on [malverncivicsociety.org.uk](http://malverncivicsociety.org.uk)

### Tuesday 26 March. Local Visit: A History of Medicine in Worcester

We will visit the Cathedral Library to see its collection of ancient manuscripts, followed, with kind permission of the Vice Chancellor, by a 'behind the scenes' tour of the old Boardroom at the University, where the British Medical Association was founded in 1832, the Jenny Lind Chapel and the medical museum. During the tour, Prof Richard Lewis will tell us about the history of medicine in Worcester over the centuries, using the paintings and artifacts which we will see.

**NB:** the Cathedral Library is accessed by a medieval staircase of forty-six steps, and we are advised that it is not suitable for those with mobility issues, a heart condition or severe asthma.

**Visit leader:** Jenny Cowpe

**Price:** £13.50 plus booking fee

**Maximum number:** 20

**Start:** 11.00am

**Finish:** c.4.00pm

**NB:** Lunch at own cost in Cathedral café.

**Transport:** Own transport/car share or rail option (Foregate St is nearest station)



## Friday 5 April. Social: Morning Coffee/Breakfast at The Lyttelton Well

Watch the hustle and bustle of Church Street whilst enjoying the company of friends and indulging in a full menu of breakfast delights.

**Social leader:** Carole Entwistle

**Price:** Free but pay for your own snack

**Maximum number:** 10

**Start:** 10.00am prompt

**Finish:** 11.00am

**Address:** Church Street. WR14 2AY

## Friday 12 April. Talk: *John Whitgift, Bishop of Worcester and Archbishop of Canturbury*

To be given by Christopher Barnett

John Whitgift was a famous Bishop of Worcester and Archbishop of Canterbury, whose life gives many fascinating, and often surprising, insights into society, religion and politics in the second half of the sixteenth century. This talk, which includes a large number of illustrations, explores Whitgift's life and times, and his impact both locally, in Worcestershire and the Welsh Marches, and on many aspects of national life.



Trinity College, University of Cambridge

## Saturday 20 April. Country Walk: Elmley Castle Woods

This walk circles Castle Hill, where an ancient timber fort once stood.

**Walk leader:** Christopher Barnett

**Start:** 10.00am

**Length:** 4.5 miles

Full details and meeting points on [malverncivicsociety.org.uk](http://malverncivicsociety.org.uk)

## Tuesday 23 April. Local Visit: Hartlebury Castle and Library

A great opportunity to have an introductory talk and guided tour of the Library, and to visit the museum and grounds at Hartlebury Castle, the residence of the Bishops of Worcester from the 13th century until 2007.

**Visit leader:** Mary Siviter/David Ebsworth

**Price:** £24 (including tea and cake) plus booking fee

**Maximum number:** 32

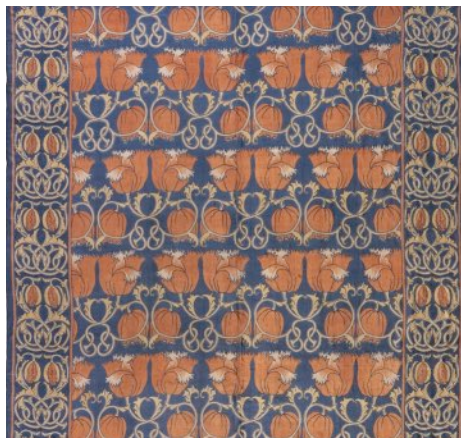
**Start:** 10.30am **Finish:** c 3pm

**Transport:** Own transport/car share

**Friday 10 May. Talk: *Charles Voysey: The Last Genius of the Arts and Crafts Movement***

To be given by Ian Lloyd-Oswell

C. F. A. Voysey (1857–1941) was an English architect and furniture and textile designer. Voysey's early work was as a designer of wallpapers, fabrics and furnishings in a simple Arts and Crafts style, but he is renowned as the architect of several country houses. Ian Lloyd-Oswell has been passionate about Voysey's life and work from an early age and will speak about the architect's style and achievements within the Arts and Crafts movement.



Bed cover by Charles Francis Annesley Voysey, G. P. and J. Baker Ltd. and Liberty Co.

**Tuesday 14 May. Coach Tour: Chillington Hall and Brewood**

A day with the Giffard family, who have lived at Chillington Hall since the Middle Ages and whose ancestors are buried in Brewood Church. We will have a guided tour of the house and a trailer tour of the park and lake. Following an al fresco lunch, we will then drive to Brewood, where we will have a guided tour of the Church and the Giffard tombs, followed by a cuppa.

**Visit leader:** Roger Sutton

**Price:** £40, plus booking fee

**Maximum number:** 50

**Start:** 8.30am

**Finish:** c.6.00pm

**Transport:** coach

**Sunday 19 May for six days. Open to Civic Society Members: Overseas Holiday to the Chateaux and Gardens of the Loire.**

Organised by Clive Hooper.

For details and booking, please contact Clive at [clive.hooper@hotmail.co.uk](mailto:clive.hooper@hotmail.co.uk)

**Thursday 23 May. Country Walk: Castle, Churches and Court at Castlemorton**

From quiet roads and tracks, through wildflower meadows and pastureland and finishing around the Tump, a medieval castle with earthworks and fishponds.

**Walk leader:** Christopher Barnett

**Start time:** 2.00pm

**Length:** 4.5 miles

Full details and meeting points on [malverncivicsociety.org.uk](http://malverncivicsociety.org.uk)





Villandry Chateau gardens

© Jose Ignacio Soto

June

LOCAL VISIT

### Saturday 1 June. Local Visit: Perrycroft House and Garden

This is a unique opportunity to visit Perrycroft House and Garden, an Arts and Crafts building designed by the architect CFA Voysey. It was built in 1895 for John Wilson, a Birmingham industrialist and Member of Parliament. Perrycroft was built as a family home, a dream house set in the magnificent scenery of the Malvern Hills.

**Visit leaders:** Elaine and Geoff Tomlinson

**Price:** £27.00 (including refreshments) plus booking fee.

**Maximum number:** 50

**Start and Finish:** Further information nearer the time

**Transport:** Own transport or car share.

**Address:** Jubilee Drive, Upper Colwall. WR13 6DN

TALK

### Friday 14 June. Talk: *The Rise and Fall of Worcestershire's Witley Court*

To be given by Ray Sturdy.

A truly spectacular palace was created by the Dudley dynasty during Britain's industrial age. No expense was spared on the construction of the house, grounds and the magnificent unique fountain. But what happened? Now a shell of its former self, Ray Sturdy will be present to share the fascinating story of then and now.

## Saturday 22 and Sunday 23 June: Midsummer Malvern Festival

Please see separate programme on the website later in the year, at [malverncivicsociety.org.uk](http://malverncivicsociety.org.uk)

WALK

### Monday 24 June. Country Walk: The Battle that Never Was – Abberley and Woodbury Hill

Mainly through Herefordshire woodland, there are two parts, the second being optional. Part one visits Woodbury Hill and the second, Abberley Hill. The walk route is a figure of eight allowing walkers to choose the length.

**Walk leader:** Christopher Barnett

**Start time:** 2.00pm

**Length:** 4 miles or 8 miles.

Full details and meeting points on [malverncivicsociety.org.uk](http://malverncivicsociety.org.uk)

LOCAL VISIT

### Wednesday 26 June. Local Visit: Behind the Scenes at Witley Court

Following the talk earlier in the month, we will enjoy a unique tour of this splendid ruined Italianate mansion, home to the Foley family from the seventeenth century and, later, the Earls of Dudley.

The tour will include a visit to the cellars and stable block and we will see the famous Perseus and Andromeda Fountain fire up during the visit. After lunch (not included in the price), we will have a tour of Great Witley Church with the Churchwarden.

**NB: the tour of the cellars is not suitable for those with mobility issues.**

**Visit leader:** Elaine Tomlinson/Ann Bartlett

**Price:** £26 plus booking fee (**NB:** £17.50 plus booking fee for English Heritage members)

**Maximum number:** 30

**Start:** 10.30am (arrive from 10am)

**Finish:** c.3.00pm

**Transport:** own transport/car share

July

LOCAL VISIT

### Thursday 4 July. Local Visit: The Forthampton Estate, Gloucestershire

From the eleventh century onwards, the village of Forthampton and its manor house were closely linked with Tewkesbury Abbey. Bought by Issac Maddox, Bishop of Worcester, in 1750, whose only daughter, Mary, married the Revd James Yorke in 1762, it has been in the Yorke family for 250 years. We will enjoy a tour of the manor house and gardens with Anabel Yorke and her Head Gardener and have an opportunity to explore the village afterwards.

**NB: this tour is not suitable for wheelchair users.**

**Visit leader:** Jenny Cowpe

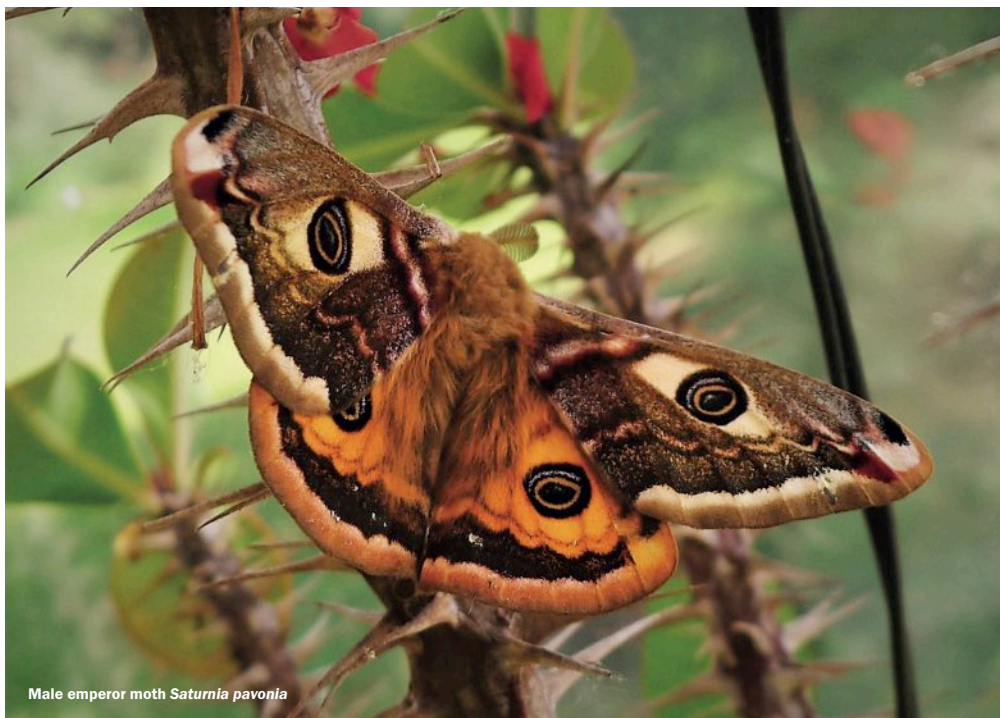
**Price (including tea):** £22 plus booking fee

**Maximum number:** 20

**Start:** 2.00pm

**Finish:** c.4.00pm

**Transport:** own transport/car share



Male emperor moth *Saturnia pavonia*

Gail Hampshire, CC BY 2.0 DEED

WALK

## **Saturday 6 July. Country Walk: Butterflies and Moths in Haugh Woods, Woolhope.**

Haugh (pronounced Hoff) Woods are ancient woodlands and nationally important for butterflies and moths.

**Walk leader:** Christopher Barnett

**Start time:** 10.00am

**Length:** 4 miles

Full details and meeting points on [malverncivicsociety.org.uk](http://malverncivicsociety.org.uk)

TALK

## **Friday 12 July. Talk: *Great Malvern Station and its Railways***

To be given by Michael Pritchard

Great Malvern station has evolved from 1860 to the present day, but it nearly didn't happen at all. The influence of local celebrities was essential in the station being built and then becoming the gateway to the Water Cure, ensuring the success of Malvern as a spa town.

WALK

## **Thursday 25 July. Country Walk: A Heritage Trail around Warndon Villages**

The largest new urban development in the 1980s, it's easy walking along lanes and tracks which offer insights into the scheme to unite ancient and modern, town and country.

**Walk leader:** Christopher Barnett

**Start:** 2.00pm

**Length:** 3 miles

Full details and meeting points on [malverncivicsociety.org.uk](http://malverncivicsociety.org.uk)



**Wednesday 7 August. Talk and Visit: The Malvern Priory Windows**

To be given by Katherine Little

This will be a special opportunity to visit Malvern Priory and hear about the unique and beautiful stained glass windows from Katherine Little, an expert on the subject and author of several books on the history of the Priory.

**Visit leader:** Elaine Tomlinson

**Price:** £6 plus booking fee (money raised will be given as a donation to the Priory floor levelling fund)

**Maximum number:** 40

**Start:** 6.30pm

**Finish:** 7.30pm

**Transport:** own transport/car share



© J. Gurfogg, Flickr

**Friday 16 to Sunday 18 August. Oxford Weekend**

A new venture for 2024!

The Society is offering an opportunity to explore Oxford and Blenheim over a three-day weekend, with transport by executive coach throughout and accommodation for two nights at a four-star hotel with breakfast and all dinners included.

**Visit leader:** Clive Hooper

**Price:** £439 (single supplement £69). **NB:** a £75 deposit is required to secure the booking



**Minimum number:** 25

**Start:** TBA

**Finish:** TBA

September

TALK

**Friday 13 September. Talk: *Malvern Might-Have-Beens***

To be given by Ann Backhouse

How Malvern might have looked had the selection of building plans described in the talk ever materialized.

WALK

**Saturday 14 September. Country Walk: Heritage Day – Edwyn Ralph and Edwin Loach.**

The walk links two little-known Motte and Bailey castles, both close to very early, twelfth century churches set in fields. The latter is a historical site maintained by English Heritage.

**Walk leader:** Christopher Barnett

**Start time:** 10.00am

**Length:** 5 miles

Full details and meeting points on [malverncivicsociety.org.uk](http://malverncivicsociety.org.uk)

LOCAL VISIT

**Friday 20 September. Local Visit: Guided Walk and Tour of Stocks Apple and Hop Farm**

Following Ali Capper's popular talk in '23, this walk and tour will be guided by Ali or an expert team member. Set in the beautiful rolling Worcestershire countryside, we will see both hops and apples being harvested and we hope to see the process of the hops being separated from the vine, laterals and leaf. There's also an opportunity to taste the results of previous harvests at The Brewery (at own cost). Note: What we see will depend on the timing of harvesting.

**Visit leader:** Carole Entwistle

**Price:** £16.00 plus booking fee

**Maximum number:** 60

**Start:** 3.00pm

**Finish:** 4.30–5.00pm

**Address:** (for parking) The Hop Shed, Suckley, Worcester WR6 5EQ

**Transport:** Own transport/car share



Apple harvest in Egnach Jay Jarosz, CC BY-SA 4.0, via Wikimedia Commons

## TALK

**Friday 11 October. Talk: *Worcestershire Wildlife Trust*****Speaker:** TBA

Taking action for nature in Worcestershire. A chance to hear about plans and projects to sustain natural environments in our area.

## LOCAL VISIT

**Thursday 24 October. Local Visit: 'Behind the Scenes' at Cheltenham College and The Wilson, Cheltenham Museum and Art Gallery**

We are invited to tour 'behind the scenes' at Cheltenham College, followed by refreshments. After lunch (own choice), we will have a guided tour of the Arts and Craft Exhibition in this fascinating museum and art gallery.

**Visit leader:** Roger Sutton**Price:** £25 plus booking fee**Maximum number:** TBA**Start:** 10.30am at College and 2.00pm at The Wilson**Finish:** c.4.00pm**Transport:** own transport/car share

## WALK

**Thursday 31 October. Country Walk: Dymock Poets**

Complementing the talk in '23 given by Mary Constable, this walk is set in the countryside around Dymock, home to a group of twentieth century poets.

**Walk leader:** Christopher Barnett**Start:** 2.00pm**Length:** 4 miles

Full details and meeting points on [malverncivicsociety.org.uk](http://malverncivicsociety.org.uk)



**Friday 8 November. Talk: 98 Days**

To be given by Lara Vafiadis.

Malvern College Alumna Lara Vafiadis recently completed a 3,000 mile row across the Atlantic, a daunting challenge in aid of charity. In this inspiring talk we will hear about what drove her to take part in this gruelling journey and the challenges she met along the way.

**Saturday 28 December. Country Walk: Malvern Common and/or Malvern Hills**

The walk commences in Great Malvern, walk route will be determined on the day according to the weather.

**Walk leader:** Christopher Barnett

**Start:** 10.00am

**Length:** TBD

Full details and meeting points on [malverncivicsociety.org.uk](http://malverncivicsociety.org.uk)

## Executive Committee 2024

**President:** Katharine Barber [president@malverncivicsociety.org.uk](mailto:president@malverncivicsociety.org.uk), 01684 566249

**Chair:** David Ebsworth [chair@malverncivicsociety.org.uk](mailto:chair@malverncivicsociety.org.uk), 01684 560019

**Vice Chair:** Michael Pritchard [vicechair@malverncivicsociety.org.uk](mailto:vicechair@malverncivicsociety.org.uk), 01684 310149

**Treasurer:** Rob Carrington [treasurer@malverncivicsociety.org.uk](mailto:treasurer@malverncivicsociety.org.uk), 07887 853506

### Committee Members:

**Alan Cowpe** [communications@malverncivicsociety.org.uk](mailto:communications@malverncivicsociety.org.uk), 01684 569520

**Jenny Cowpe** [events@malverncivicsociety.org.uk](mailto:events@malverncivicsociety.org.uk), 01684 569520

**David Entwistle** corporate affairs [@malverncivicsociety.org.uk](mailto:@malverncivicsociety.org.uk), 07401 322666

**Stephen Goodenough** [planning@malverncivicsociety.org.uk](mailto:planning@malverncivicsociety.org.uk), 01684 567150

**Brian Iles** [plaques@malverncivicsociety.org.uk](mailto:plaques@malverncivicsociety.org.uk), 01684 575 336

**Jackie Oakey** [membership@malverncivicsociety.org.uk](mailto:membership@malverncivicsociety.org.uk), 01684 575957

**Michael Pritchard** [railways@malverncivicsociety.org.uk](mailto:railways@malverncivicsociety.org.uk), 01684 310149

**Roger Sutton** [cemetery@malverncivicsociety.org.uk](mailto:cemetery@malverncivicsociety.org.uk), [bookings@—](mailto:bookings@—), 01684 565273

### Non-Committee Members with special responsibilities:

**Elizabeth Adlam** [trees@malverncivicsociety.org.uk](mailto:trees@malverncivicsociety.org.uk), 01684 892 425

**Christopher Barnett** [countrywalks@malverncivicsociety.org.uk](mailto:countrywalks@malverncivicsociety.org.uk), 07714 215455

**Jan Condon** [archives@malverncivicsociety.org.uk](mailto:archives@malverncivicsociety.org.uk), 01684 866210

**Lesley Cutler** [townwalks@malverncivicsociety.org.uk](mailto:townwalks@malverncivicsociety.org.uk), 01684 561013

**Carole Entwistle** [social@malverncivicsociety.org.uk](mailto:social@malverncivicsociety.org.uk), 07492 689082

**Sandra Hinton** [civicawards@malverncivicsociety.org.uk](mailto:civicawards@malverncivicsociety.org.uk)

**Elaine Tomlinson** [talks@malverncivicsociety.org.uk](mailto:talks@malverncivicsociety.org.uk), 07946 738660

## The Aims of the Civic Society

To promote high standards of planning and architecture in or affecting Malvern and the surrounding countryside.

To educate the public in the geography, history, natural history and architecture of Malvern and the surrounding countryside.

To secure the preservation, protection, development and improvement of features of historic or public interest in Malvern and the surrounding countryside.

## Planning and Awards

Throughout the year, our Planning Sub-Committee meets regularly and keeps a watchful eye on all new planning applications, aiming to ensure that over-development does not occur and opposing proposals that are considered insensitive or inappropriate in relation to the existing built environment.

To further this aim, the Society has an annual Award Scheme to promote good-quality design of buildings in the Malvern area.

## Plaques

The Society is responsible for researching and displaying blue plaques to commemorate the historic associations of famous people who, in the past, lived in Malvern.

The green plaques to be seen around town are dedicated to those associated with the nineteenth-century Water Cure.

## Membership

Now in its sixty-sixth year, the Malvern Civic Society was founded in 1958 and is an active, community organisation and a registered charity. It is entirely independent, with members drawn from across the area and beyond, who all care about Malvern, value its past and wish to protect its future. If you would like to join, please follow the **Join Us** link on our website: [malverncivicsociety.org.uk](http://malverncivicsociety.org.uk)



British Camp, Malvern Hills